

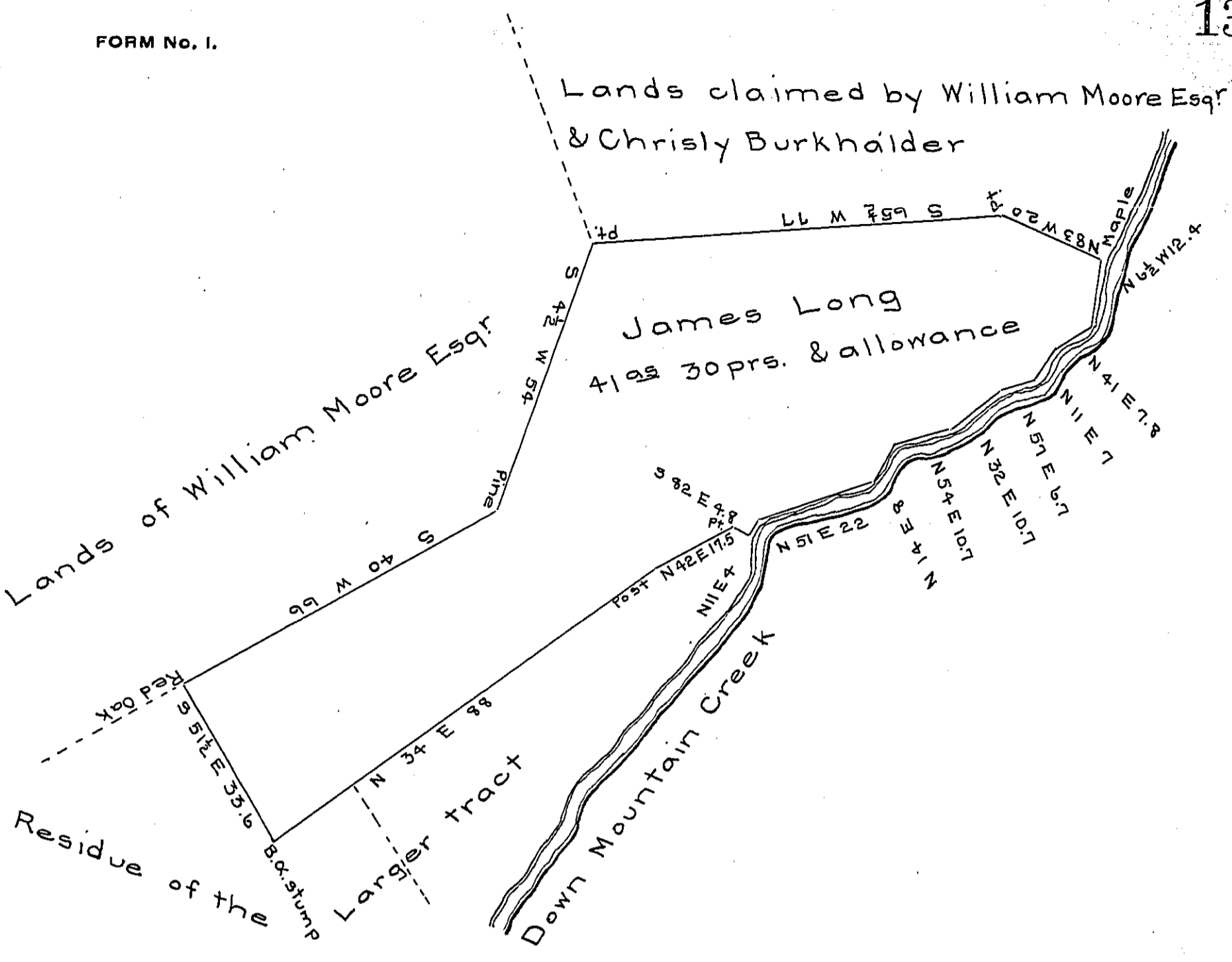
Lands claimed by William Moore Esqr & Chrisly Burkholder

Lands of William Moore Esqr

James Long  
41<sup>as</sup> 30prs. & allowance

Residue of the  
Larger tract

Down Mountain Creek



A draught of a tract of land situate in Middleton (now South Middleton) township Cumberland county containing forty one acres and thirty perches and the usual allowance of six pr. cent & part of a larger tract, for which James Long obtained a warrant bearing date the 24<sup>th</sup> day of May AD. 1753 - surveyed for William Moore 21<sup>st</sup> March 1835.

To Jacob Spangler Esqr }  
Surveyor General

Patrick Davidson D.S.

*IN TESTIMONY* that the above is a copy of the original remaining on file in the Department of Internal Affairs of Pennsylvania, made conformably to an Act of Assembly approved the 16th day of February, 1833, I have hereunto set my Hand and caused the Seal of said Department to be affixed at Harrisburg, this first day of March 1906

*Joseph R. Brown*  
Secretary of Internal Affairs